

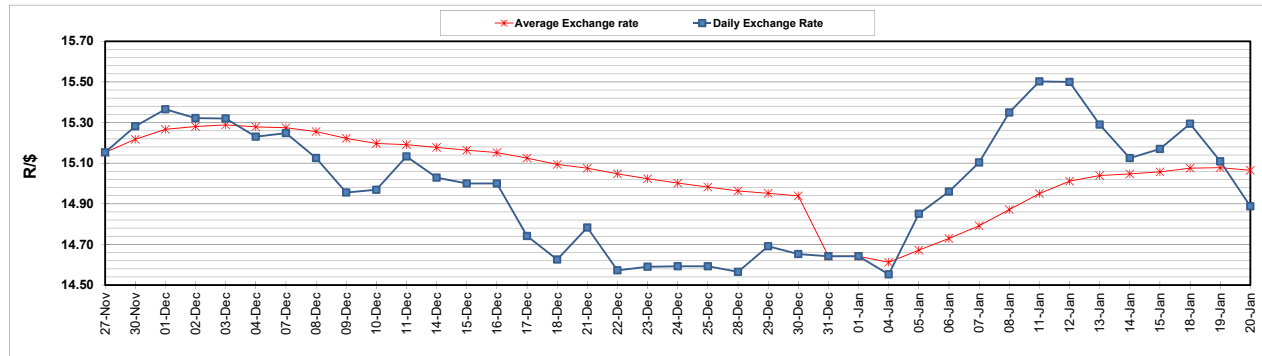
	PETROL 95 ULP	PETROL 93 ULP & LRP	DIESEL 0.05%	DIESEL 0.005%	ILL. PAR.
GAUTENG PUMP PRICE (SA c/l) AS FROM 06/01/2021	1,486.000	1,469.000	-	-	-
WHOLESALE PRICE (SA c/l) AS FROM 06/01/2021	-	-	1,300.420	1,301.820	739.688
SINGLE NATIONAL MAXIMUM RETAIL PRICE	-	-	-	-	930.000
BASIC FUEL PRICE - 20/01/2021 (SA c/l)	602.022	593.812	596.909	598.364	584.866
PRESS RELEASE CONTRIBUTION TO BFP 06/01/2021 - 20/01/2021 (SA c/l)	519.170	512.170	541.630	543.030	527.128
UNIT OVER/(UNDER) RECOVERY - 20/01/2021 (SA c/l)	(82.852)	(81.642)	(55.279)	(55.334)	(57.738)
AVERAGE BASIC FUEL PRICE 31/12/2020 - 20/01/2021	588.264	581.160	587.031	588.919	574.885
AVERAGE UNIT OVER/(UNDER) RECOVERY 31/12/2020 - 20/01/2021	(79.761)	(80.456)	(60.067)	(60.289)	(62.423)

ANALYSIS MOVEMENT OF AVERAGE OVER/(UNDER) RECOVERY

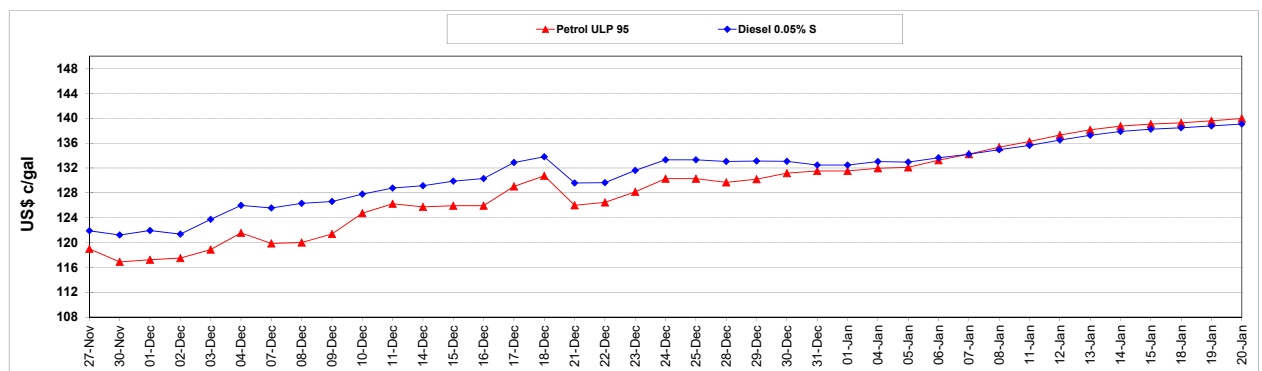
	PETROL 95	PETROL 93	DIESEL 0.05%	DIESEL 0.005%	ILL. PAR.
- MOVEMENT IN INTERNATIONAL PRODUCT PRICES	(74.837)	(75.593)	(55.154)	(55.360)	(57.612)
- MOVEMENT IN EXCHANGE RATE	(4.924)	(4.864)	(4.914)	(4.929)	(4.812)
AVERAGE UNIT OVER/(UNDER) RECOVERY 31/12/2020 - 20/01/2021	(79.761)	(80.456)	(60.067)	(60.289)	(62.423)

R/\$ EXCHANGE RATE - (R/\$14.8875 - 20/01/2021)

EXCHANGE RATE USED IN BASIC FUEL PRICE



INTERNATIONAL PRODUCT PRICES OF BASKET USED IN BASIC FUEL PRICE



BASIC FUEL PRICE IN SA CENTS PER LITRE

